



RAMFAN combines high performance turbofan design with high strength polymers to create a line of rugged, portable turbo blowers. The UB-Line is ideal for general use, confined space, hazardous ventilation and delivers the highest airflow in their class. The double-wall, polyethylene casing is light-weight, corrosion and chemical resistant and handles the bumps and falls of any job site.



8"/20cm | UB20 Blower/Exhauster

- Powerful, compact size and lightweight
- High pressure axial blower with ultra-quiet operation
- Corrosion-proof, dent-resistant and virtually indestructible
- IP55 rain tested switch enclosure
- Double-walled UV resistant polyethylene housing
- Thermal switch provides overheat protection
- 15'/4.6m AC power cord
- 15'/4.6m DC power cord w/ battery clips
- IMPA Code: ED7002 - 591406
- NSN Number: 4940-01-559-9190



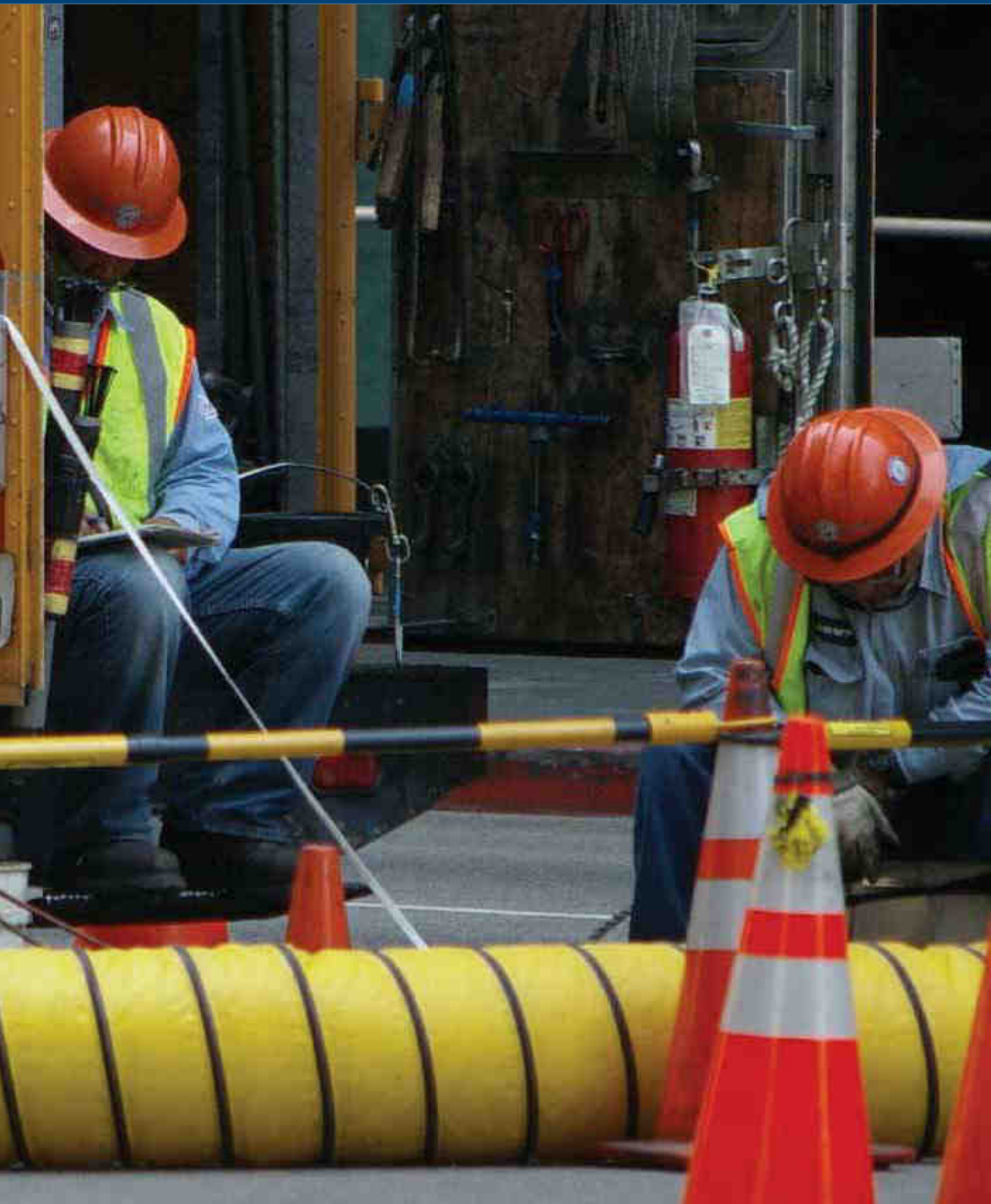
UB20 (12V DC)

MODEL	UB20 (60Hz)	UB20 (50Hz)	UB20 (12V)
Order #	ED7002	ED8002	ED9002
STOCK LOCATIONS			
FREE AIR 15ft/4.6m 1-90° turn 15ft/4.6m 2-90° turns	980cfm/1,666m ³ /hr 789cfm/1,341m ³ /hr 666cfm/1,132m ³ /hr	819cfm/1,392m ³ /hr 659cfm/1,120m ³ /hr 558cfm/948m ³ /hr	862cfm/1,465m ³ /hr 695cfm/1,181m ³ /hr 586cfm/996m ³ /hr
IMPELLER	9-blade	9-blade	9-blade
DUCT ADAPTER(S)	1	1	1
WEIGHT	17lbs/8kg	17lbs/8kg	17lbs/8kg
DIMENSIONS (h/w/d)	14/12/13 in 355/305/330 mm	14/12/13 in 355/305/330 mm	14/12/13 in 355/305/330 mm
NOISE	74dB	74dB	74dB
MOTOR	0.33Hp/0.25kW	0.33Hp/0.25kW	0.25Hp/0.19kW
ELECTRIC	115VAC, 1ø, 50/60Hz	240VAC, 1ø, 50/60Hz	12V DC
AMPS – RUN/START	2.5A/9.5A	1.3A/4.8A	11.5A
APPROVALS			

Airflow Certified by Colorado Experimental
Engineering Station, Inc. (CEESI)

See page 14 for hazardous location models

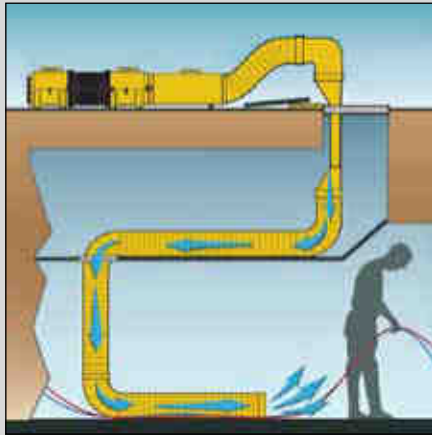




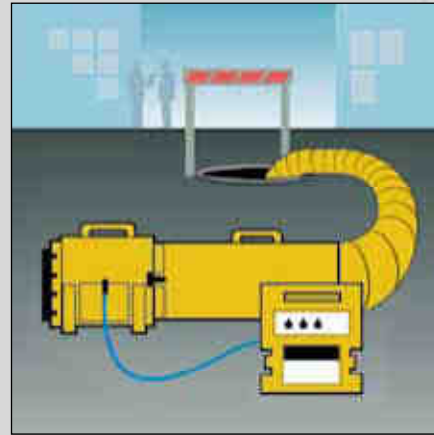


Ventilation System Applications

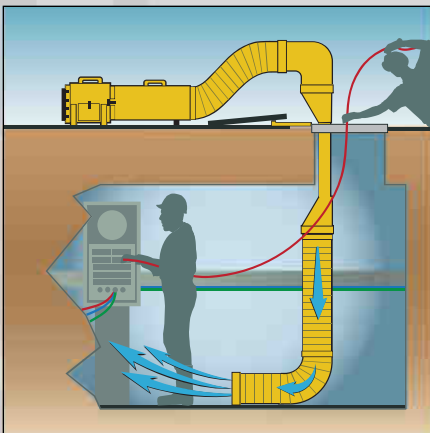
UB20 Turbo-Couple™



UB20 Battery-Pak



UB20 M.E.D.*



* UB30 Compatible with Reducer Accessory.

UB20 Heating System



EFi-Series Box Fans





Quick-Couple™ Reversible Canister

Detachable in seconds, the Quick-Couple™ Canister with attached duct conveniently reverses from discharge to suction, making use and storage easier while protecting duct from rips and tears. Available with 15'/4.6m or 25'/7.6m of duct.

15'/4.6m blower w/ canister:

14h x 12w x 31.5d in.
35.6h x 30.5w x 80d cm

25'/7.6m blower w/ canister:

14h x 12w x 41.5d in.
35.6h x 30.5w x 105d cm

Order # System Includes

ED7015	8" 115V Blower/Exhauster, Quick-Couple™ Canister w/ 15' duct
ED7025	8" 115V Blower/Exhauster, Quick-Couple™ Canister w/ 25' duct
ED8015	20cm 240V, Blower/Exhauster, Quick-Couple™ Canister w/ 4.6m duct
ED8025	20cm 240V, Blower/Exhauster, Quick-Couple™ Canister w/ 7.6m duct
ED9015	8" 12V Blower/Exhauster, Battery Clips, Quick-Couple™ Canister w/ 15' duct
ED9025	8" 12V Blower/Exhauster, Battery Clips, Quick-Couple™ Canister w/ 25' duct

UB20 Turbo-Couple™

Long Distance Ventilation Solution

Quick-connecting two or more RAMFAN UB20 axial blowers in series increases airflow up to 50% when blowing through long, winding duct runs.

Designed for duct runs up to 25'/7.6m, the UB20 airflow significantly drops when blowing through more than 75'/22.9m of duct or when confronted with multiple turns in the duct.

Long, winding duct runs need more power and pressure to deliver sufficient airflow, a costly proposition. The Turbo-Couple™ delivers what is needed by quickly joining two or more UB20's in series, each adding pressure and power to deliver a dramatic airflow increase through the duct.

Simple, cost effective and now available.

- Pushes *MORE* air through long winding ducts
- Ventilate through 250ft/75m duct
- UB-line compatible
- High impact polyethylene housing



Order # System Includes

ED7300	Turbo-Couple™ Accessory
ED7000TC	8" 115V, 50/60Hz Blower/Exhausters (qty. 2) and Turbo-Couple™
ED8000TC	20cm 240V, 50/60Hz Blower/Exhausters (qty. 2) and Turbo-Couple™



Battery Pak & Charger – 12V DC High-Low Control UB20

RAMFAN's long-life Battery Pak now with dual high-low speed control. Pulse width modulation extends battery life up to 8 hours in low setting yet gives a full 2.5 hours on high. UB20 fan can be powered by vehicle battery with supplied connector. Built-in charger allows you to fully recharge the battery cable in 12 hours.

Purge the area on high for 10 minutes, reduce to low speed (low-noise as well) and maintain fresh air for the whole work shift. Ideal for construction job sites to eliminate noisy gasoline-engine blowers.

- High-low control enables fast-purge ventilation and lower speed for maintaining safe work space
- High impact case includes battery and built-in charger for overnight charging
- Up to 10 hours of continuous operation
- Lightweight and portable



Order

System Includes

BPV-12/BPV-12CE	12V DC Battery Pak w/ built in Charger
ED9015-BAT/ED9015-BATCE	8"/20cm Blower/Exhauster, 12V DC Battery Pak with Built-in Charger, Quick-Couple™ Canister with 15'/4.6m duct
ED9025-BAT/ED9025-BATCE	8"/20cm Blower/Exhauster, 12V DC Battery Pak with Built-in Charger, Quick-Couple™ Canister with 25'/7.6m duct



UB20 M.E.D.™ Manhole Entry Device

The M.E.D.™ allows workers to enter and exit through small man-size openings while maintaining continuous ventilation. Without such a device, duct fills the manhole opening, preventing rapid entry and exit.

Tightly integrated into the UB-line of confined space ventilation equipment, RAMFAN's M.E.D.™ is quick to assemble and the new swiveling elbow makes duct alignment easy.

Changing its cross-section from circular to elliptical and back to circular minimizes loss and optimizes airflow into a confined space, while providing adequate room for the worker to enter and exit unimpeded. The rugged polyethylene construction endures heavy wear and tear and will last for years.

Comprised of three components, the M.E.D.™, swiveling elbow, and universal mount, the RAMFAN M.E.D.™ system increases safety by maintaining continuous airflow.

- Ventilate without blocking entry
- Maintain airflow while working
- UB-line compatible
- High impact polyethylene housing



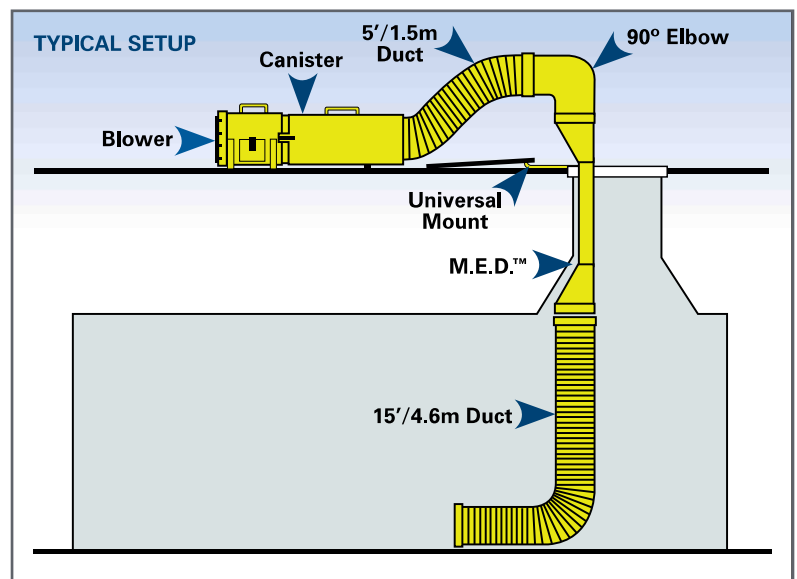
See page 15 for anti-static M.E.D.™ System



System Includes (or may be individually ordered): 8"/20cm Blower/Exhauster, Quick-Couple™ Canister with 15'/4.6m and 5'/1.5m of duct, Manhole Entry Device, 90° Elbow, Universal Mount, 8"/20cm duct adapter for additional duct connections.

Order

ED7015-MED	M.E.D. System with 115V, 50/60Hz Blower
ED8015-MED	M.E.D. System with 240V, 50/60Hz Blower
ED9015-MED	M.E.D. System with 12V DC Blower



SET-UP PROCEDURE

1. Remove Manhole Lid
2. Place Manhole Mount at the edge of the manhole so that the hook on the mount is hanging a few inches over the manhole. Place the Manhole lid at the opposite end (lid will be propped up by manhole mount).
3. Attach the 15'/4.6m Duct to the bottom of the M.E.D.™
4. Secure the M.E.D.™ by hooking onto Manhole Mount
5. Attach the 90° Elbow by lining up the arrows at the bottom of the elbow with the arrows at the top of the M.E.D.™ then twisting a half rotation.
6. Set up Blower and Canister with 5'/1.5m Duct approx. 7'/2m away from manhole. Attach Canister to blower using the rubber latches on the side of the Canister.
7. Pull out Duct from Canister and attach to the 90° Elbow
8. Plug Blower into power source and turn on.



UB20 In-Line Heating System

RAMFAN's UB20 In-Line Heating System with its propane-fired, heat-exchanger provides safe, warm breathing air during cold conditions.

- For tent/shelter or confined space heating
- Airflow can cycle with heat or run continuous for confined space ventilation
- Remote thermostat included
- Up to 10 hours of continuous operation with standard propane cylinder tank
- Heater attaches quickly and easily to UB20 blower
- Includes propane regulator and connection assembly
- Easy access top mounted heater control panel
- Compatible with UB20 M.E.D.™ system
- 15'/4.6m power cord w/ IP55 rain tested switch enclosure



MODEL	HA01
STOCK LOCATIONS	
FREE AIR	947cfm
Straight Duct	15ft: 520cfm 25ft: 521m³/hr
1-90° turn	15ft: 485cfm 25ft: 432m³/hr
2-90° turns	15ft: 467cfm 25ft: 414m³/hr
DUCT ADAPTER(S)	1
POWER	115VAC, 1Ø, 60Hz
OUTPUT	55k BTU (gross)
WEIGHT	32lbs
DIMENSIONS (h/w/d)	22/13/14 in
APPROVALS	

Airflow Certified by Colorado Experimental Engineering Station, Inc. (CEESI)

*HA04 70k BTU optional

ORDER PACKAGES	
Confined Space Heating	
Order #	HA01-100HT
System Options	UB20 8" Blower, Heater with Regulator, Quick-Couple™ Canister w/ 15' Duct
Order #	HA01-125HT
System Options	UB20 8" Blower, Heater with Regulator, Quick-Couple™ Canister w/ 25' Duct
Tent/Shelter Heating	
Order #	ED7125-HT
System Options	UB20 8" Blower, Heater with Regulator, 15' Duct, Duct Storage Bag